

# Wolverine Habitat Improvements

Northwest Trek Wildlife Park, WA, USA

**Total area:** 24,907 ft<sup>2</sup>

**Animal area:** 5,675 ft<sup>2</sup>

**Animal:** Wolverine

**Budget:** \$130,000

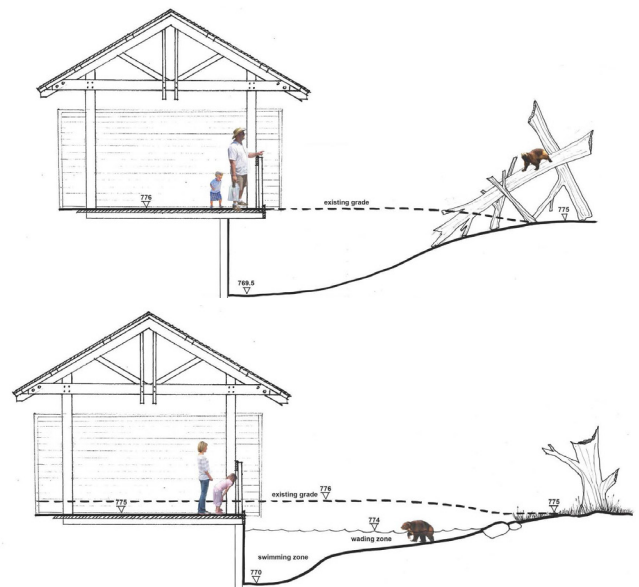
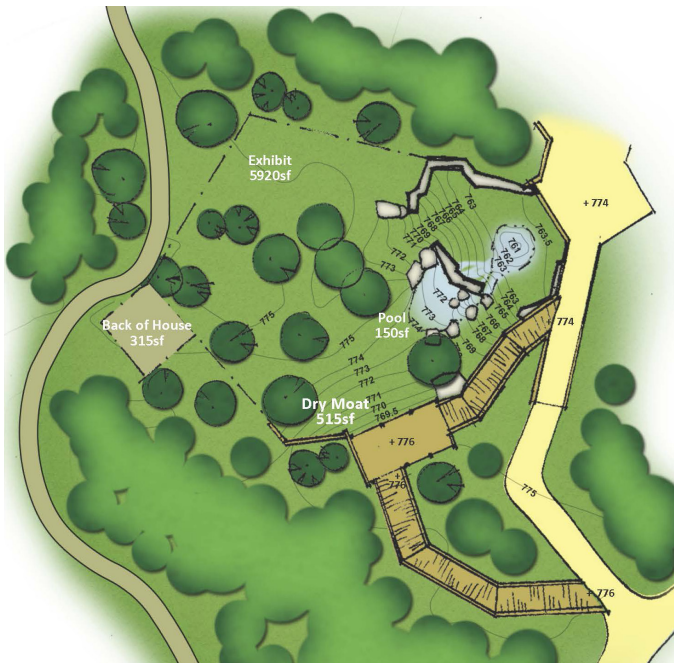
**Time frame:** July- August 2014

*Mt. Rainier  
Glacier Basin Creek*



## Concept Design for Habitat Improvements

Northwest Trek, a wildlife park at the foothills of Mt. Rainier, was conceived by Jones and Jones Architects and Landscape Architect in 1973 as a sanctuary for local wildlife and a unique school for man, where a great number of people can pass through the animals' habitat with very minimal impact. The park is divided into three areas: free roaming herbivores area, large enclosures for carnivores, and wetland zone. Zoo Design Inc was invited to provide a vision for enlargement and habitat improvements for wolverines.



*Moat containment options*



Contact: Heidi Hellmuth, Zoological Coordinator  
(360) 832-7154 Heidi.Hellmuth@nwtrek.org

Or

Chip Heinz, Maintenance Manager  
Chip.Heinz@nwtrek.org

